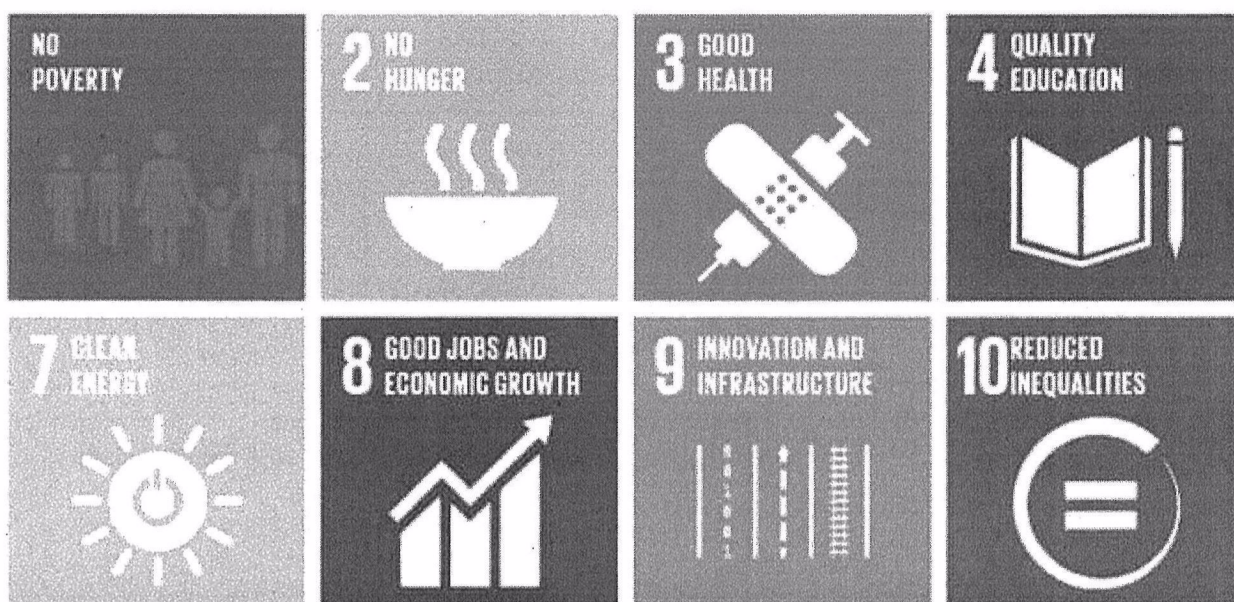


Green Policy

There are 17 Sustainable Development Goals which have been adopted by the UN "which are an urgent call for action by all countries - developed and developing - in a global partnership. They recognize that ending poverty and other deprivations must go together with strategies that improve health and education, reduce inequality, and spur economic growth – all whilst tackling climate change and working to preserve our oceans and forests." (UN Dept of Economic and Social Affairs 2015) [THE 17 GOALS | Sustainable Development \(un.org\)](#)



We use these goals as the basis for challenging our practices, policies, play and education.

Poverty

Child Poverty is a big issue even in the UK. 1 in 4 children in the UK live in families where their parents' work doesn't always pay, and 60% of those who do work are still under the poverty line. We seek to recognise any economic need that our families may be experiencing. We will ensure gluts of milk, fruit and veg are shared with such families and will discuss any possible referrals to CAP, CA and to Food Inc. Any play items, or donated items which are no longer suitable for use in the setting, however still with some value, may be offered to those families in need. We maintain a small welfare fund which can be used to make small gifts to families where that need may not be met elsewhere. We are careful to maintain our fees as low as possible and will use any available opportunity to have a shared voice with other members of our sector regarding the under resourcing of childcare from National sources.

No Hunger

We work closely with Food Inc to receive graded out produce for use in our settings and to share with families and staff.

Good Health

Please see our separate Policies

Child Health Policy [Child Health Policy Nov 21.docx](#)

Outdoor Play Policy [Outdoor Play policy NOV 2019.doc](#)

R:\Centre Admin\Policies\Policies\ALL Policies\Green policy ~ Jan 23 READY.doc

Last saved by Deborah Oakey 16/01/2023 12:34:00

Quality Education

This is a key responsibility for us to ensure that our children access the very best education possible. Please see our R:\Centre Curriculum\EYFS\CURICULUM 2021\Our Educational Aspirations.docx. Further to this we have a responsibility to ensure that parents have access to our learning and knowledge to support their child's learning at home. We also ensure that we invest in our workforce through the provision of external, internal and apprenticeship training. We consider that we have a role within our community to support simple educational principles and learning

- Parents
 - Unused goods and materials will be requested from parents to be used or sold within the setting
 - Our Treasure Play policy actively seeks re-cycled items from parents to further the children's play and learning.
 - We have conversations with parents about their choices for cloth nappies and enable their use at Rainbow.
 - We request that parents share their skills with us when the need is there to mend broken equipment to extend their use.
- Children
 - Staff will model environmental awareness in all areas of their work
 - Discussion will be encouraged answering the "why" questions
 - Children's interests and learning will be explored through play themes which highlight environmental awareness in all its relevant facets
 - The play spaces will be equipped with resources and books enabling environmental education and play
 - The children will be involved in sorting recyclable materials
- The staff
 - will engage with, contribute to, and understand this policy to enable effective practice
 - Training will be provided for staff to support awareness of the creative use of materials
- Community
 - We will engage with the local community whenever possible to support education and to be involved with local environmental projects as appropriate.

Gender Equality

Only 3% of our workforce in England is male. We are keen to welcome male members of staff and seek to ensure the application process enables that. We have a further responsibility to ensure that all children in our care have access to equal aspirations for their future and have equal access to role models that do not present gender stereotypes.

Clean Water and Sanitation

It is easy to take the cleanliness and abundance of our water for granted however our weather patterns are changing and it is a natural resource that we should respect. We take the following practical steps

- The water usage at Daisy is metered, which enables us to monitor outgoing water supply.
- We do not utilise bottled water.
- Any leaks are resolved as soon as possible to ensure water is not lost unnecessarily

- The use of push control taps will be enabled wherever possible to reduce the risk of taps being left flowing.
- When it is not possible to fit push control taps children and adults will be encouraged to remember to turn taps off after usage.
- Whenever possible wastewater from water play activities will be used to nourish plant growth.
- We will work towards water conservation by collecting rainwater to water the gardens.
- We will discuss with the children why we are conserving / re-utilising water and involve them in that process
- We will not use water unnecessarily, i.e. hosepipes will not be left running, water usage will be considered.

Clean Energy

It is easy to take it for granted that power is available to us at a flick of a switch however the provision of energy is currently fuelled by harnessing natural earth resources, many of which are depleting and many of which cause their own harm to the environment.

We take the following practical steps towards Energy Conservation...

- Best value is monitored to ensure that we hold appropriate contracts with energy providers to ensure the lowest possible cost per unit of fuel tariff.
- Night-time energy tariffs are utilised wherever possible at Daisy due to storage heaters being fitted currently.
- The heating is monitored to maintain an appropriate working temperature and is not left on later into the summer season than is required or switched on in the winter season prior to need.
- All lights are turned off at the close of each day and are only used when needed.
- Energy saving LED light bulbs are fitted wherever possible
- All computers and screens are turned off at the close of the day and earlier if it is predicted that they will receive no further use.
- The Microsoft energy saving tool is utilised to allow a computer to "sleep" when it has not received any use over a period of 15 minutes.
- All possible appliances are switched off at the socket at the close of each day, and only switched on if actively required.
- All electrical goods are PAT tested annually to ensure they are not faulty and hence drawing more power than required.
- The doors are kept closed when ever possible whilst recognising the need for providing children with free-flow play inside and outside and maintaining good ventilation.
- Whenever possible more than one item is cooked in the oven at a time to ensure the capacity is effectively utilised
- When boiling a kettle, the appropriate quantity of water is heated.
- A water boiler is installed at Rainbow
- We talk with children about why we are turning some of the lights off, closing doors to keep heat in and turning off equipment at the close of the day.

Good Jobs and Economic Growth

We have a clear responsibility to our team to ensure that we provide the best possible opportunities for employment. The Early Years sector is underfunded and undervalued however Daisy and Rainbow Childcare will seek to ensure that the best possible salary is paid to all team members and that the Voluntary Living Wage or higher is paid to anyone who is not currently accessing apprenticeship or short-term training with us. Further to this, team members will have

R:\Centre Admin\Policies\Policies\ALL Policies\Green policy ~ Jan 23 READY.doc

Last saved by Deborah Oakey 16/01/2023 12:34:00

access to a range of training opportunities, and we will support individuals to access University qualifications.

Innovation and Infrastructure

When making infrastructure changes to our premises we will consider how best we can use sustainable resources, consider longevity of provision and how our choices may affect the planet. We will do our best to “stand back” reflect and think about innovation using the 17 SDGs as an audit for change or indeed lack of change. We recognise that some “dreamed for” changes are just not necessary, and the more sustainable approach will be to work with current infrastructure.

Reduced Inequalities

We are careful to ensure that each child is seen as an individual and that any individual differences, needs or difficulties at home are understood. We do this by listening carefully to the child and to his parents/ carers and will then reflect upon the best possible way of reducing any possible inequality through careful provision.

Sustainable Cities and Communities

Our settings are based in Totnes. We take children out into their local community, get involved in community ventures and support community initiatives. We take children into our green spaces and use this as opportunity for discussion. We maintain links with Transition Town Totnes, Food Inc, the Bike Hub, Share Shed, Caring Town Totnes and Bridgetown Alive! As a way of staying connected and alert to local sustainability projects and issues. This ensures we have a voice in our community and the children through that.

Responsible Consumption

Daisy and Rainbow Childcare ensures that we develop practices which ensures commitment to reducing expenditure, reducing unnecessary waste, and reducing mal effect upon the planet. We will seek to achieve these aims through several practical activities which will be made known to staff, parents/carers, and children in the expectation that all users may support us in these aims.

We audit this by using the 8Rs...

Reduce	We keep consumption to a minimum.
Reuse	We re-use resources that can have a second or even third life in the same or new guise We offer others the opportunity to re-use items that are no longer of value to us – Refurnish, Charity shops, car boot sales etc
Repair	We use the services of parents, staff and local people to mend items that are safely repairable for play and use
Recycle	We use the local council recycling provision for recycling and encourage the children to learn the basics of sorting and understanding which items can be recycled in this way. We invest in the business recycling scheme for tin, plastics, cardboard, and food. Soft plastics are collected and returned to the supermarket.
Rot	We ensure that food waste is allowed to rot and decompose in a natural way ensuring the resource is returned to the earth
Respect	We will teach and model respect for the environment, and compassion for all living things.
Reflect	We are thoughtful, reflective and model “wondering why”
Responsibility	We take responsibility for our own actions and seek to make responsible choices on behalf of the children we care for. Teaching them the same principles.

We achieve this in practical ways as below...

R:\Centre Admin\Policies\Policies\ALL Policies\Green policy ~ Jan 23 READY.doc

Last saved by Deborah Oakey 16/01/2023 12:34:00

Recycling and Reducing our waste

- “Before you Bin It – Think!...Could it be used in any other way?”
- Recycled items may be used in creative play – Each setting will maintain their own “creative Play Recycling Box”
- If the item is not suitable for creative play – Can it be recycled?
 - Paper and card products, Plastic and tin products can be sorted for recycling on the school grounds, at Daisy
 - At rainbow we have a paid- for service which requires the use of purple sacks for all recycling.
 - Glass – a member of staff will be elected who can take glass to the re-cycling depots
 - Compostable items to be used on site on the gardens wherever possible
 - Furniture will be placed for parental sale, taken to Re-Furnish or to the local recycling depot for re-sale when ever possible
 - Any used saleable items will be placed for immediate sale, given to a charity shop or taken to Refurnish.
 - Any donated clothing unsuitable for sale will be sold by the bag to a scrap cloth merchant or taken to a local clothing bank
 - J-cloths will be laundered for re-use
 - The use of single use plastics is minimised
 - Biodegradable plastic bags are sourced in preference to single use.

Office

- Increasingly we will digitise documents that do not need to be printed
- Office waste will be sorted to enable paper recycling
- Any paper printed on one side only will be re-utilised.
- Envelopes are opened in a way which will enable their re-use
- Photocopiers and printers will be sourced which allow for the cheapest possible running costs.
- Documents are printed or photocopied only if necessary
- Items are double side printed whenever possible
- Pages are printed in black and white when colour is not necessary to be utilised
- Colour paper will be utilised rather than coloured inks whenever feasible.
- Batteries are taken for recycle

Re-using community waste

We recognise the value of sourcing good second-hand goods for use in the setting. Full advantage will be taken of:-

- Re-Furnish – community furniture re-cycling organisation
- Car boot sales
- Charity shops
- Items donated from parents
- Ebay
- Facebook Marketplace and Freecycle

Food

- We will access food locally whenever possible
- Foods will be used which are in season
- Cooking from raw ingredients is encouraged
- Each site has a small garden which may be developed to grow fruit and vegetables.

R:\Centre Admin\Policies\Policies\ALL Policies\Green policy ~ Jan 23 READY.doc

Last saved by Deborah Oakey 16/01/2023 12:34:00

- Any un-used food stuffs may be utilised for a following meal or day when appropriate food safety and hygiene allow.
- We engage with a local charity which supplies us with graded out vegetables and produce in glut. <https://foodincommunity.org/>
- We will ensure waste food is composted

Protect the Planet

We ensure that our conversation and actions reflect our understand for the need to protect the planet and are watchful of the resources we use and how we use them.

The Outdoor environment

- We will ensure that the local environment, where the settings are based, are cared for by picking up litter.
- Any natural spaces accessible to the children and families from our sites will be utilised and cared for appropriately
- We will encourage Nature Paws and muddy Boots sessions with the children to deepen their understanding of the local environment and our interdependency with it.
- The outdoor natural spaces will be tended and nurtured to support wildlife
- We will encourage and enable the use of natural spaces to grow edible produce which the children can plant, tend, eat and learn about.

Life Below Water

We are aware that many items we use and then discard into the water system will have a harmful effect upon the rivers, oceans and the plants and animal species that live there.

- We source sustainable glitter
- We use washable face and bottom flannels
- We use laundry wash balls and an Eco Conditioner
- We are increasingly using environmentally friendly cleaning products
- We avoid the use of cling film
- We use plastic free wet wipes when they are necessary

Life On Land

We will raise the children's awareness of the animal species that live on the land. We will maintain the garden at each setting to enable insect species to have a home and to enable education through exploration and conversation.

Peace and Justice

We ensure that Daisy and Rainbow are safe, just places with firm clear boundaries that support everyone to develop the skills of acknowledging and respecting other people that come alongside them to play. This provides a firm foundation for children's later understanding of these principles and to have a voice to demand it for all. Please also read our Fundamental British Values Poster

Partnerships for the Goals

We recognise that Daisy and Rainbow Childcare cannot work in isolation to achieve these goals. We work in partnership with a wide number of individuals, groups, and organisations, many of which have been mentioned above. We involve our parents as much as we can in our activities and consider them our partners with children at the centre. Our aspiration is that every small thing we do, with a small person at heart, will matter and have a positive effect.

Policy formulated on: 19th March 2013

Policy last reviewed on: Jan 2023

Signed: Marianne Parke

